

Publications in Geography

COMPUTER ATLAS OF BANGLA DESH

by

Paul R. Baumann
and
Charles W. Woolever



DEPARTMENT OF GEOGRAPHY

S.U.N.Y. at Oneonta

ONEONTA, NEW YORK

COMPUTER ATLAS OF BANGLA DESH

by

Paul R. Baumann
and
Charles W. Woollever

P. B. AND C. W.

Copyright 1972
Faculty Student Association
at Oneonta

FOREWORD

This atlas was produced in order to present some of the spatial patterns resulting from the physical and cultural composition of this new nation which was formerly East Pakistan and to examine the potential use of computer maps in a published form. The data for the maps presented here was drawn largely from the 1951 and 1961 Census of Pakistan. These maps, developed as choropleth maps, were produced by a modified version of Morton W. Scriptor's CMAP program.* No reductions from the printouts were made in the maps.

*Scriptor, Morton W., "Choropleth Maps on Small Digital Computers," Proceedings of the Association of American Geographers, Vol. 1 (1969), pp. 133-136.

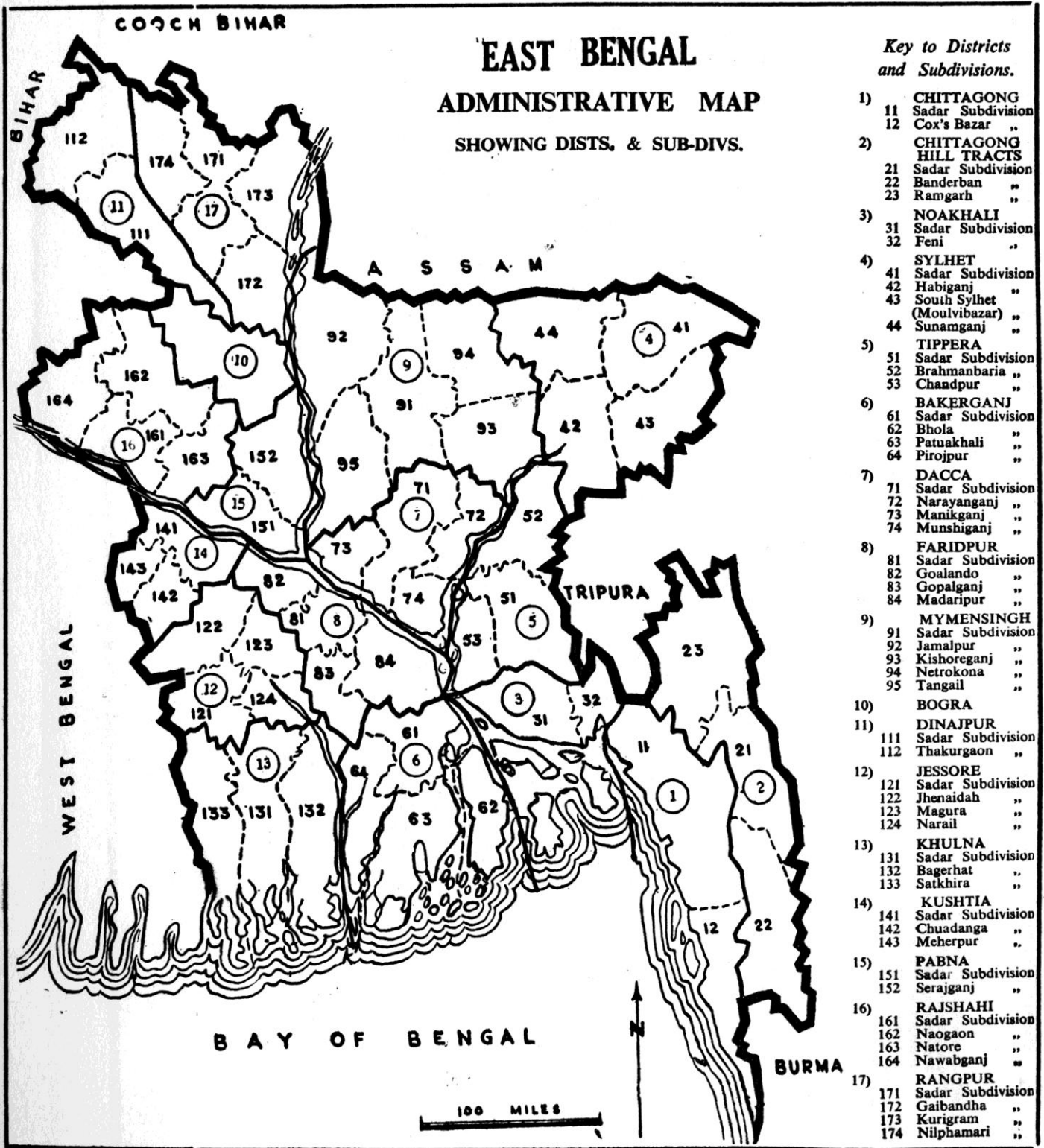
Date

Revised Foreword

Date

TABLE OF CONTENTS

Maps	Page
Administrative Map, East Bengal.....	1
Average Elevation In Each District.....	3
Relative Relief In Each District.....	5
Average Annual Temperature In Each District.....	7
Average Monthly Maximum Temperature In Each District.....	9
Average Monthly Minimum Temperature In Each District.....	11
Average Annual Rainfall In Each District.....	13
Percent of Annual Rainfall Between May and October By District.....	15
Percent of District Covered By Alluvial Soils.....	17
Percent of Land In Forests And Mangroves By District, 1951.....	19
Percent of Land Cultivated In Each District, 1951.....	21
Rice Cultivation In Each District, 1959-60.....	23
Wheat Cultivation In Each District, 1959-60.....	25
Pulse Cultivation In Each District, 1959-60.....	27
Oil Seed Cultivation In Each District, 1959-60.....	29
Tobacco Cultivation In Each District, 1959-60.....	31
Sugar Cane Cultivation In Each District, 1959-60.....	33
Jute Cultivation In Each District, 1959-60.....	35
Tea Cultivation In Each District, 1959-60.....	37
Number of Persons In Each Subdivision, 1961.....	39
Persons Per Square Mile In Each Subdivision, 1961.....	41
Farmers as Percent of Total Labor Force, By Subdivision, 1961.....	43
Females Per 1000 Males In Each Subdivision, 1961.....	45
Density of Major Land Routes In Each District, 1961.....	47



AVERAGE ELEVATION IN EACH DISTRICT
(FEET)

10.0-24.9

25.0-69.9 +++++
 +++++
 +++++
 +++++

70.0-204.9 *****

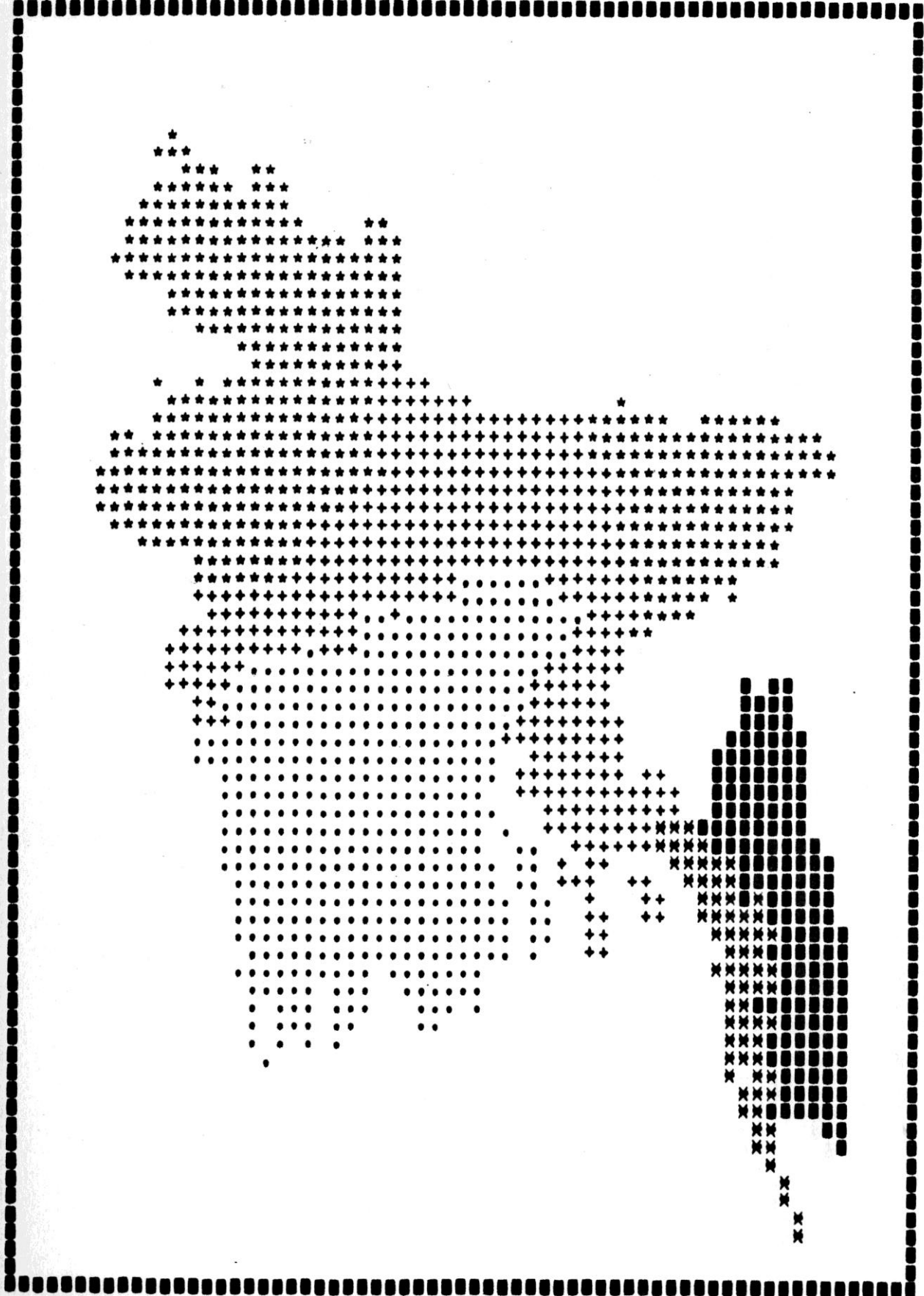
205 -609.9 XXXXX
 XXXXX
 XXXXX
 XXXXX

610.0-1825.0 ■■■■■
 ■■■■■
 ■■■■■

BASED ON U.S. ARMY MAP SERVICE MAPS AT THE SCALES OF 1:250,000
AND 1:1,000,000

SCALE: 1:3,168,000

AVERAGE ELEVATION IN EACH DISTRICT



P. B. AND C. W.

RELATIVE RELIEF IN EACH DISTRICT
(DIFFERENCE BETWEEN LOWEST AND HIGHEST
ELEVATIONS IN FEET)

0.0-29.9

30.0-119.9 +++++
 +++++
 +++++
 +++++

120.0-389.9 *****

390.0-1199.9 *****

1200.0-3620.0 ■■■■■
 ■■■■■
 ■■■■■
 ■■■■■

BASED ON U.S. ARMY MAP SERVICE MAPS AT THE SCALES OF 1:250,000
AND 1:1,000,000

SCALE: 1:3,168,000

RELATIVE RELIEF IN EACH DISTRICT



P. B. AND C. W.

AVERAGE ANNUAL TEMPERATURE IN EACH DISTRICT
(°F)

77.0-77.9
.....
.....
.....

78.0-78.9 *****

79.0-80.0 ■■■■■■
■■■■■■
■■■■■■
■■■■■■

DATA NOT NNNNN
AVAILABLE NNNNN
NNNNN
NNNNN

SOURCE: CENSUS OF PAKISTAN, 1961

SCALE: 1:3,168,000

AVERAGE MONTHLY MAXIMUM TEMPERATURE IN EACH DISTRICT
(°F)

83.0-84.9
.....
.....
.....

85.0-86.9 *****

87.0-88.0 ■■■■■
■■■■■
■■■■■
■■■■■

DATE NOT AVAILABLE NNNNN
AVAILABLE NNNNN
NNNNN
NNNNN

SOURCE: CENSUS OF PAKISTAN, 1961

SCALE: 1:3,168,000

AVERAGE MONTHLY MAXIMUM TEMPERATURE IN EACH DISTRICT



P. B. AND C. W.

AVERAGE MONTHLY MINIMUM TEMPERATURE IN EACH DISTRICT
(°F)

62.0-63.9
.....
.....
.....

64.0-65.9 *****

66.0-68.0 ■■■■■
■■■■■
■■■■■
■■■■■

DATA NOT NNNNN
AVAILABLE NNNNN
NNNNN
NNNNN

SOURCE: CENSUS OF PAKISTAN, 1961

SCALE: 1:3,168,000

AVERAGE MONTHLY MINIMUM TEMPERATURE IN EACH DISTRICT



P. B. AND C. W.

AVERAGE ANNUAL RAINFALL IN EACH DISTRICT
(IN INCHES)

55.0-69.9

70.0-84.9 +++++

85.0-99.9 *****

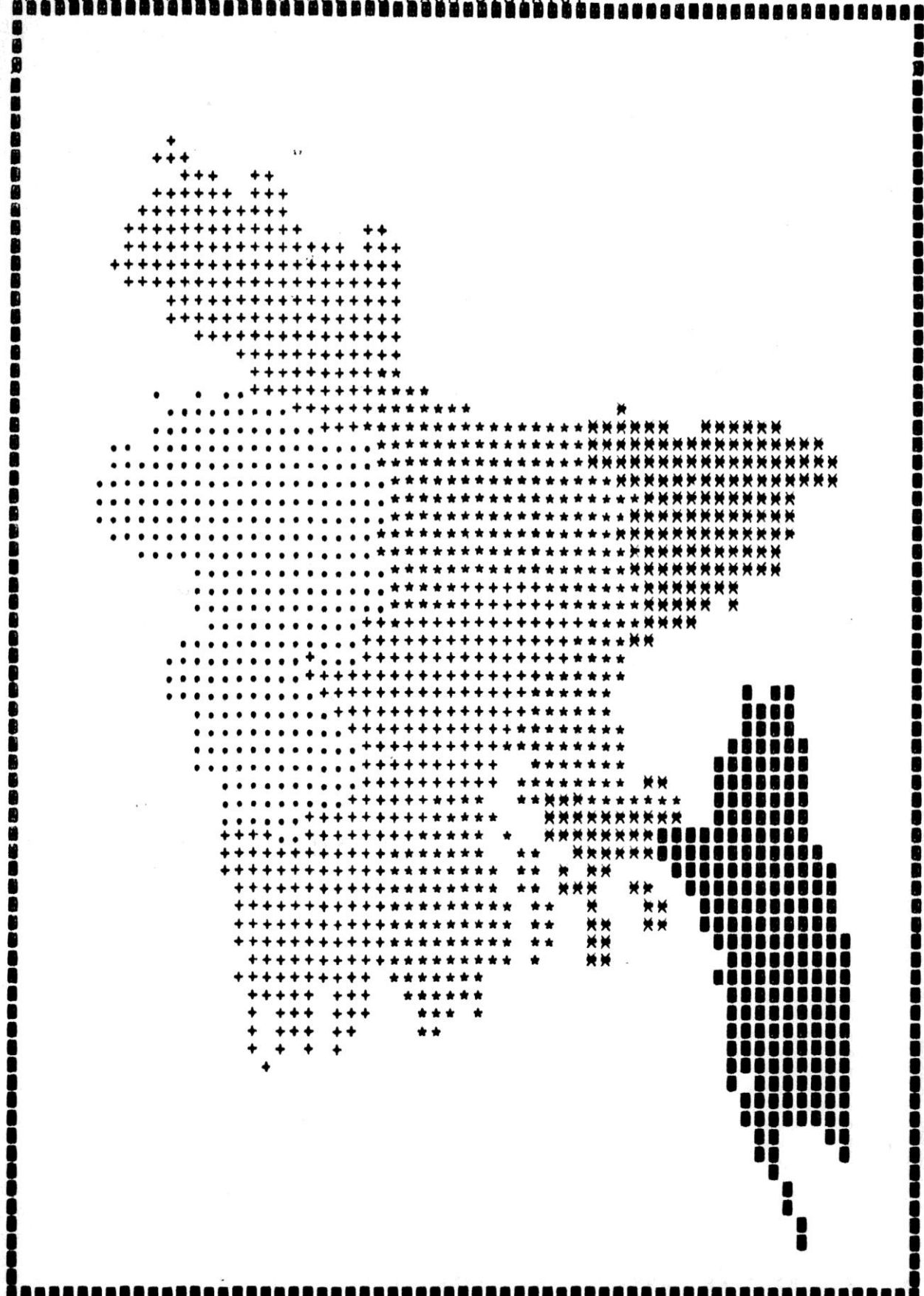
100.0-114.9 xxxxx

115+ ■■■■■

SOURCE: CENSUS OF PAKISTAN, 1951

SCALE: 1:3,168,000

AVERAGE ANNUAL RAINFALL IN EACH DISTRICT



P. B. AND C. W.

PERCENT OF ANNUAL RAINFALL BETWEEN MAY AND OCTOBER BY DISTRICT

82.0-84.9
.....
.....
.....

85.0-87.9 +++++
+++++
+++++
+++++

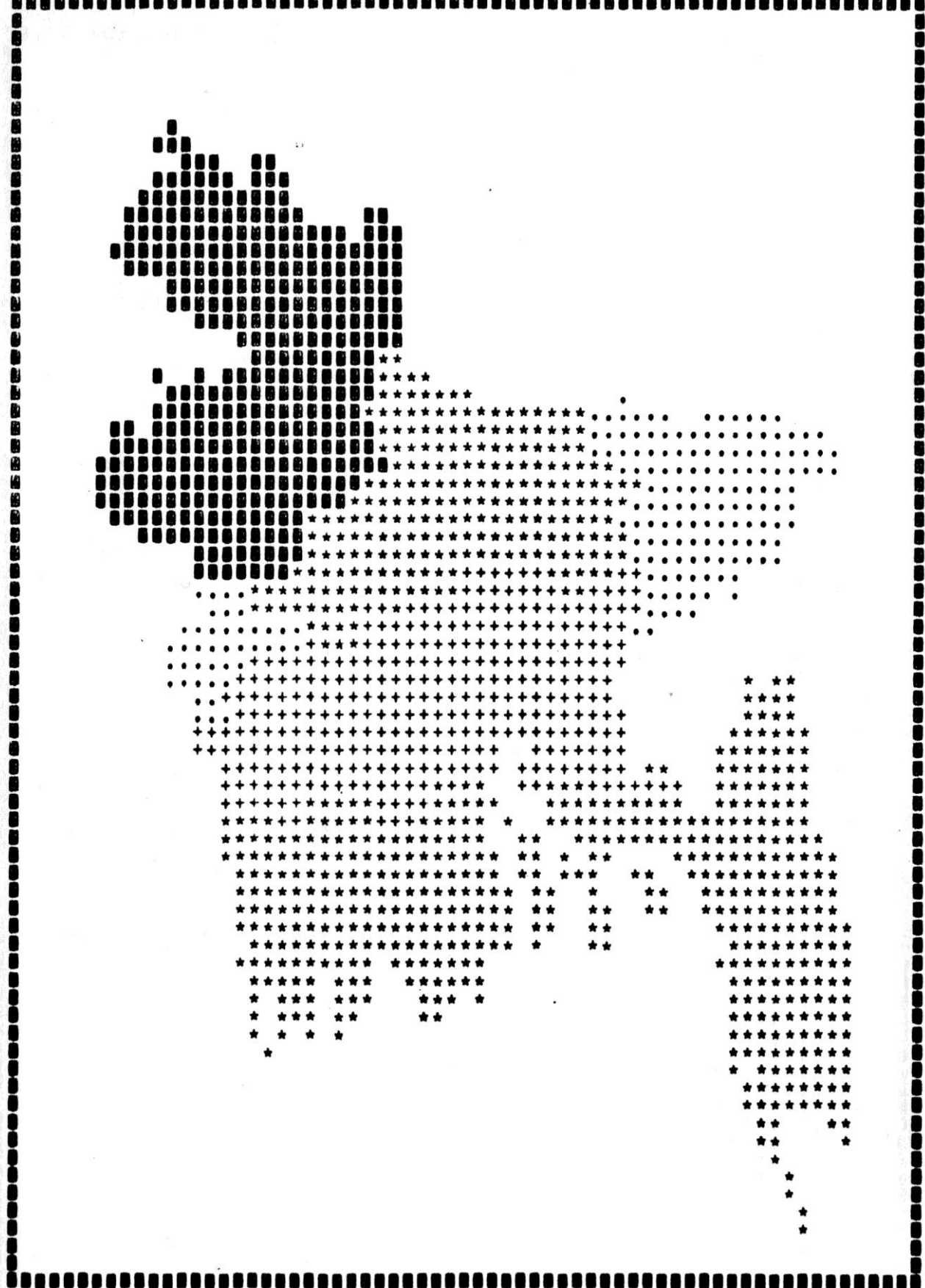
88.0-90.9 *****

91.0-94.0 ■■■■■
■■■■■
■■■■■
■■■■■

SOURCE: CENSUS OF PAKISTAN, 1961

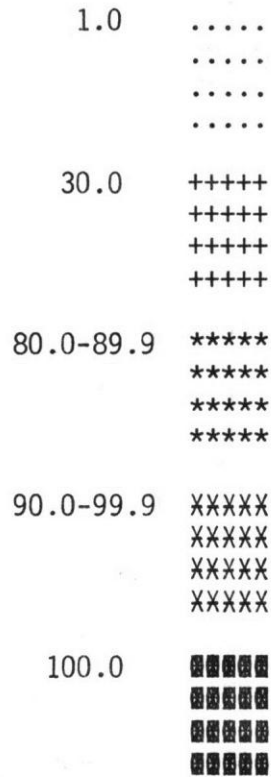
SCALE: 1:3,168,000

PERCENT OF ANNUAL RAINFALL BETWEEN MAY AND OCTOBER BY DISTRICT



P. B. AND C. W.

PERCENT OF DISTRICT COVERED BY ALLUVIAL SOILS



BASED ON THE GEOLOGICAL MAP OF INDIA BY THE GEOLOGICAL SURVEY,
1949

SCALE: 1:3,168,000

PERCENT OF DISTRICT COVERED BY ALLUVIAL SOILS



P. B. AND C. W.

PERCENT OF LAND IN FORESTS AND MANGROVES BY DISTRICT, 1951

0.0-1.0
.....
.....
.....

1.1-5.0 +++++
+++++
+++++
+++++

40.0-55.0 xxxxx
xxxxx
xxxxx
xxxxx

85.0-100.0 ■■■■■
■■■■■
■■■■■
■■■■■

SOURCE: CENSUS OF PAKISTAN, 1951, VOL. 3

SCALE: 1:3,168,000

PERCENT OF LAND IN FORESTS AND MANGROVES BY DISTRICT, 1951



P. B. AND C. W.

PERCENT OF LAND CULTIVATED IN EACH DISTRICT, 1951

40.0-50.0
.....
.....
.....

60.0-69.9 +++++
+++++
+++++
+++++

70.0-79.9 xxxxx
xxxxx
xxxxx
xxxxx

80.0-90.0 ■■■■■
■■■■■
■■■■■
■■■■■

DATA NOT NNNNN
AVAILABLE NNNNN
NNNNN
NNNNN

SOURCE: CENSUS OF PAKISTAN, 1951, VOL. 3

SCALE: 1:3,168,000

PERCENT OF LAND CULTIVATED IN EACH DISTRICT, 1951



P. B. AND C. W.

RICE CULTIVATION IN EACH DISTRICT, 1959-60
(ACRES UNDER CULTIVATION)

200,000-849,999
850,000-1,499,990	***** ***** ***** *****
1,500,000-3,000,000	■■■■■■ ■■■■■■ ■■■■■■ ■■■■■■

SOURCE: CENSUS OF PAKISTAN, 1961

SCALE: 1,3,168,000

RICE CULTIVATION IN EACH DISTRICT, 1959-60



P. B. AND C. W.

WHEAT CULTIVATION IN EACH DISTRICT, 1959-60
(ACRES UNDER CULTIVATION)

4000-9999
10000- 10000 19999	***** ***** ***** *****
20000-25000	▣▣▣▣ ▣▣▣▣ ▣▣▣▣ ▣▣▣▣
NONE REPORTED	RRRRR RRRRR RRRRR RRRRR

SOURCE: CENSUS OF PAKISTAN, 1961

SCALE: 1:3,168,000



P. B. AND C. W.

PULSE CULTIVATION IN EACH DISTRICT, 1959-60
(ACRES UNDER CULTIVATION)

1-999
1000-9999	+++++ +++++ +++++ +++++
10000-29999	XXXXX XXXXX XXXXX XXXXX
30000-60000	▣▣▣▣ ▣▣▣▣ ▣▣▣▣ ▣▣▣▣
NONE REPORTED	RRRRR RRRRR RRRRR RRRRR

SOURCE: CENSUS OF PAKISTAN, 1961

SCALE: 1:3,168,000



P. B. AND C. W.

OIL SEED CULTIVATION IN EACH DISTRICT, 1959-60
(ACRES UNDER CULTIVATION)

3500-7999
8000-16999	+++++ +++++ +++++ +++++
17000-34999	***** ***** ***** *****
35000-71000	XXXXX XXXXX XXXXX XXXXX
71000-143000	■■■■■ ■■■■■ ■■■■■ ■■■■■

SOURCE: CENSUS OF PAKISTAN, 1961

SCALE: 1:3,168,000

OIL SEED CULTIVATION IN EACH DISTRICT, 1959-60



P. B. AND C. W.

TOBACCO CULTIVATION IN EACH DISTRICT, 1959-60
(ACRES UNDER CULTIVATION)

1-1999	+++++
	+++++
	+++++
	+++++
2000-3999	XXXXX
	XXXXX
	XXXXX
	XXXXX
4000-65000	00000
	00000
	00000
	00000
NONE REPORTED	RRRRR
	RRRRR
	RRRRR
	RRRRR

SOURCE: CENSUS OF PAKISTAN, 1961

SCALE: 1:3,168,000

TOBACCO CULTIVATION IN EACH DISTRICT, 1959-60



P. B. AND C. W.

SUGAR CANE CULTIVATION IN EACH DISTRICT, 1959-60
(ACRES UNDER CULTIVATION)

1000-4999
.....
.....
.....

5000-12999 +++++
+++++
+++++
+++++

13000-28999 XXXXX
XXXXX
XXXXX
XXXXX

29000-61000 ■■■■■
■■■■■
■■■■■
■■■■■

NONE
REPORTED RRRRR
RRRRR
RRRRR
RRRRR

SOURCE: CENSUS OF PAKISTAN, 1961

SCALE: 1:3,168,000

SUGAR CANE CULTIVATION IN EACH DISTRICT, 1959-60



P. B. AND C. W.

JUTE CULTIVATION IN EACH DISTRICT, 1959-60
(ACRES UNDER CULTIVATION)

15000-49999
50000-154999	***** ***** ***** *****
155000-470000	■■■■■ ■■■■■ ■■■■■ ■■■■■
NONE REPORTED	RRRRR RRRRR RRRRR RRRRR

SOURCE: CENSUS OF PAKISTAN, 1961

SCALE: 1:3,168,000



P. B. AND C. W.

TEA CULTIVATION IN EACH DISTRICT, 1959-60
(ACRES UNDER CULTIVATION)

1-5000	+++++
	+++++
	+++++
	+++++
5000-73000	■■■■■
	■■■■■
	■■■■■
	■■■■■
NONE REPORTED	RRRRR
	RRRRR
	RRRRR
	RRRRR

SOURCE: CENSUS OF PAKISTAN, 1961

SCALE: 1:3,168,000

TEA CULTIVATION IN EACH DISTRICT, 1959-60



P. B. AND C. W.

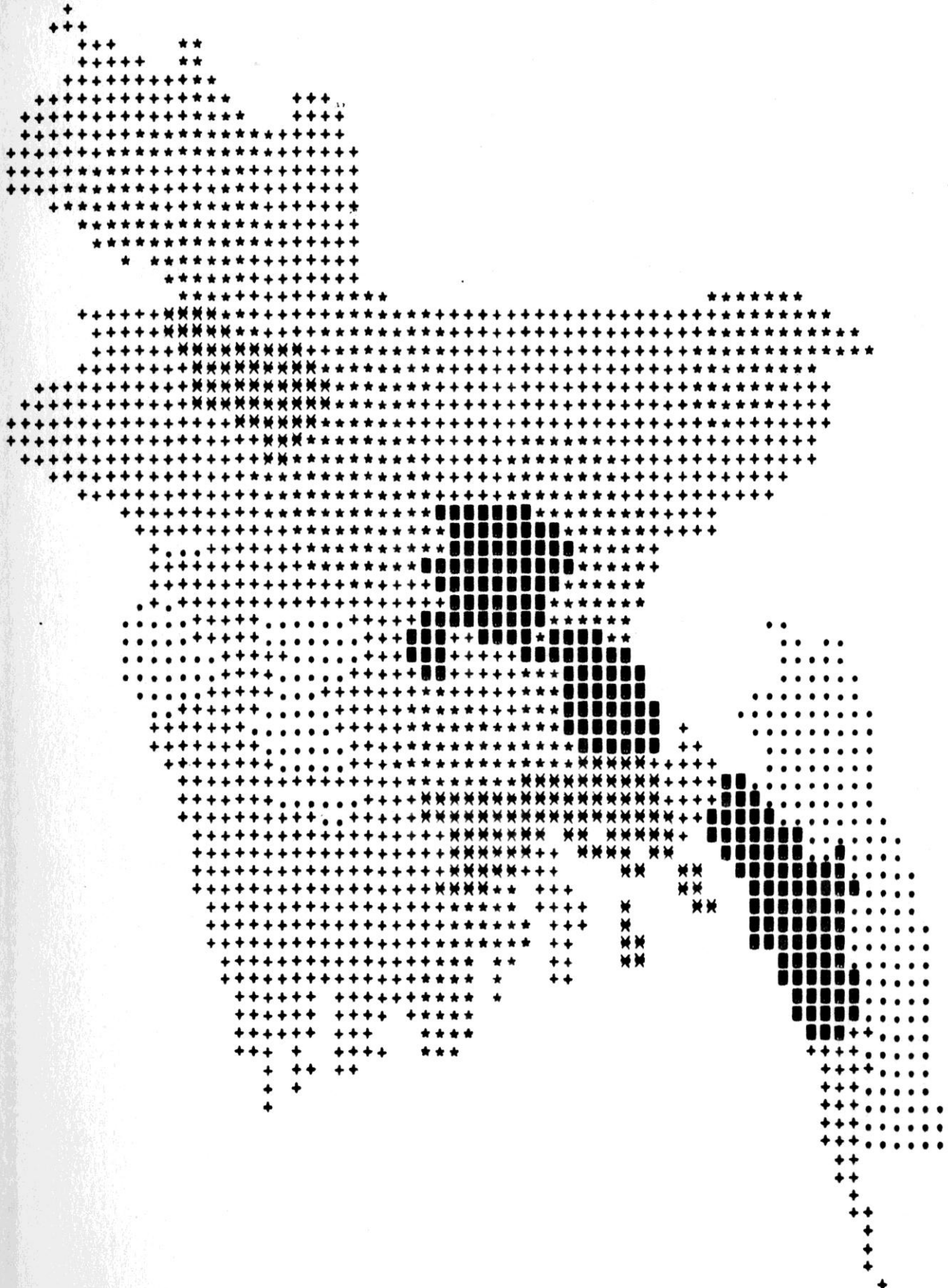
NUMBER OF PERSON IN EACH SUBDIVISION, 1961

80,000-499,999
500,000-999,999	+++++ +++++ +++++ +++++
1,000,000-1,499,999	***** ***** ***** *****
1,500,000-1,999,999	XXXXX XXXXX XXXXX XXXXX
2,000,000-3,000,000	□□□□□ □□□□□ □□□□□ □□□□□

SOURCE: CENSUS OF PAKISTAN, 1961

SCALE: 1:3,755,000

NUMBER OF PERSONS IN EACH SUB-DIVISION, 1961



P. B. AND C. W.

PERSONS PER SQUARE MILE IN EACH SUBDIVISION, 1961

40-499
500-999	+++++ +++++ +++++ +++++
1000-1499	***** ***** ***** *****
1500-2499	XXXXX XXXXX XXXXX XXXXX
2500-4500	□□□□ □□□□ □□□□ □□□□

SOURCE: CENSUS OF PAKISTAN, 1961

SCALE: 1:3,755,000

PERSONS PER SQUARE MILE IN EACH SUBDIVISION, 1961



P. B. AND C. W.

FARMERS (CULTIVATORS AND OTHER AGRICULTURISTS)
AS PERCENT OF TOTAL LABOR FORCES, BY DIVISION, 1961

50.-64.

.....
.....
.....

65.-74. +++++

+++++
+++++
+++++

75.-84. XXXXX

XXXXX
XXXXX
XXXXX

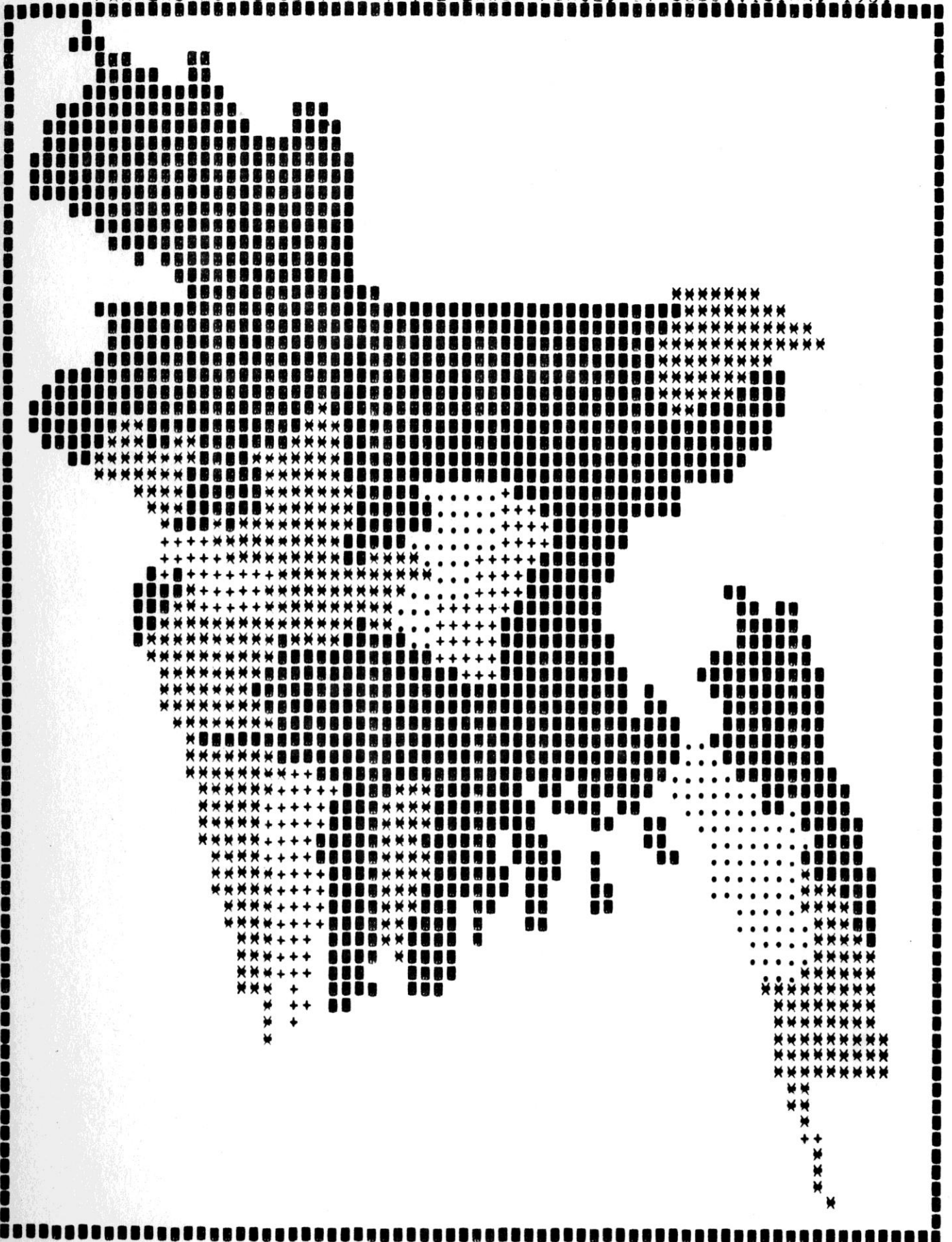
85.-95. ■■■■■

■■■■■
■■■■■
■■■■■

SOURCE: CENSUS OF PAKISTAN

SCALE: 1:3,755,000

FARMERS AS PERCENT OF TOTAL LABOR FORCE, BY SUBDIVISION, 1961



P. B. AND C. W.

FEMALES PER 1000 MALES IN EACH SUBDIVISION, 1961

700-949
.....
.....
.....

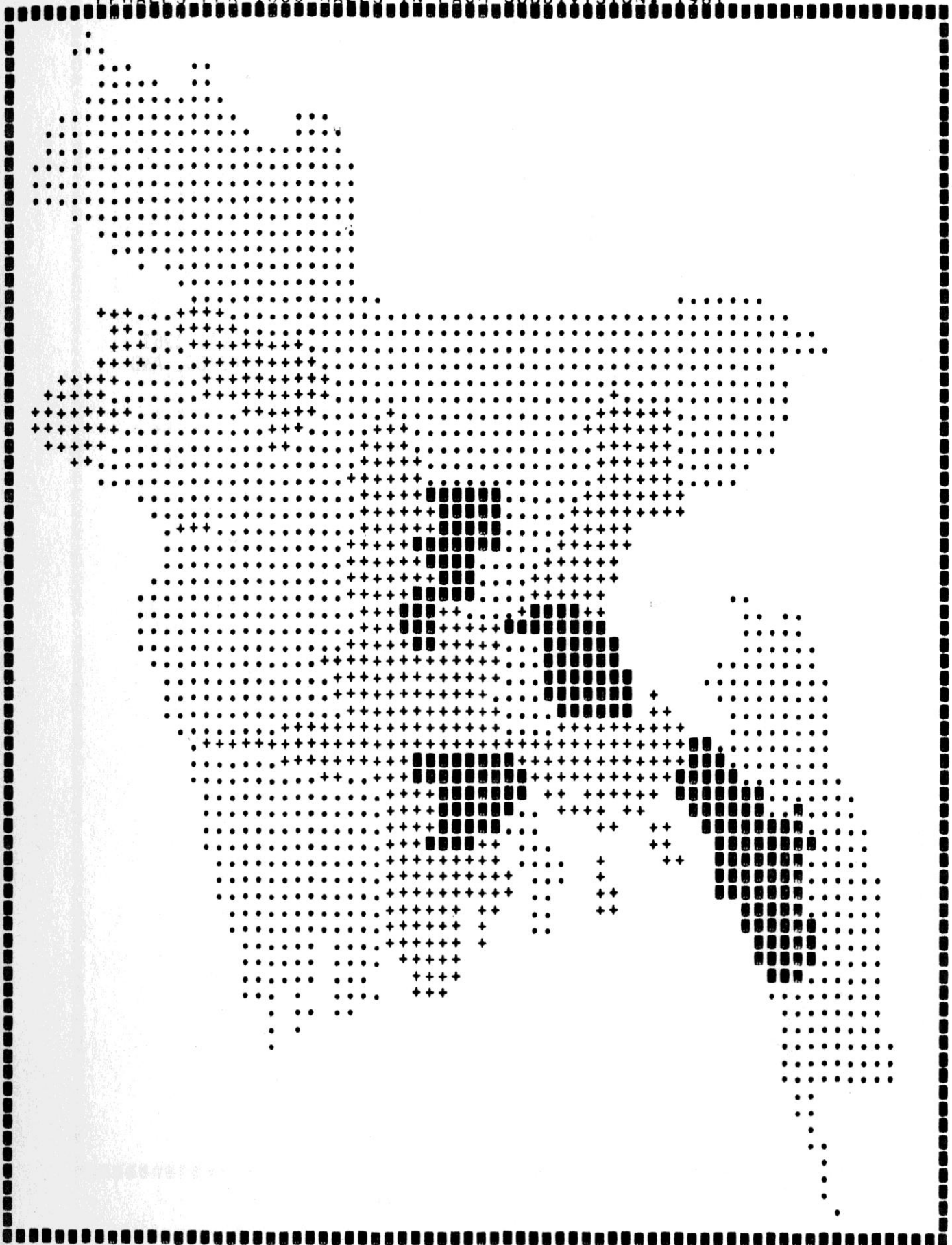
950-1249 +++++
+++++
+++++
+++++

1250-1950 ■■■■■
■■■■■
■■■■■
■■■■■

SOURCE: CENSUS OF PAKISTAN, 1961

SCALE: 1:3,755,000

FEMALES PER 1000 MALES IN EACH SUBDIVISION, 1961



P. B. AND C. W.

DENSITY OF MAJOR LAND ROUTES IN EACH DISTRICT, 1961
(NUMBER OF METALLED ROADS, MAJOR UNMETALLED ROADS, AND
RAILWAYS PER SQUARE MILE)

.03-.07
.....
.....
.....

.08-.13 +++++
+++++
+++++
+++++

.14-.20 ■■■■■
■■■■■
■■■■■
■■■■■

SOURCE: CENSUS OF PAKISTAN, 1961

SCALE: 1:3,165,000

DENSITY OF MAJOR LAND ROUTES IN EACH DISTRICT, 1961



P. B. AND C. W.

OTHER PUBLICATIONS IN THE SERIES

Publication No. 1: "Computer Assisted Instruction Programs in
Geography: Five Climate Programs" by Paul R.
Baumann

Publication No. 2: "Water Balance Atlas of New York State" by
Paul R. Baumann

These publications are available prepaid from the Faculty Association
Bookstore, Schumacher Hall, State University College, Oneonta, New York
13820 at a cost of \$1 each.

